

**EARLY CHILDHOOD PROGRAM
WASHINGTON SCHOOL
SCHOOL IMPROVEMENT PLAN
2008-2009**

Demographic Information

The Early Childhood Program at Washington School is the only preschool program in the Urbana School District #116. This program serves students between the ages of 3 and 5 years who, through a screening process, are determined to be eligible for the At-Risk or Special Education Program.

All students are served in multiage, inclusive classrooms for either half-day (2 ½ hours) or full day (6 ½ hours) for five days a week. During the 2007-08 school year 12 blended classrooms served more than 375 students. As of June, 2008 31 students screened and found eligible for enrollment were still on a waiting list for entry.

The racial breakdown was as follows:

African American: 37%

White: 36%

Multiracial: 12%

Hispanic: 9%

Asian: 5%

-14% (47) qualified for Early Childhood special education services.

-86% (294) of the students were identified as “At-Risk” for failure in education.

-26%, (76) of the At-Risk children receive speech services through special education. .

-89% of the Washington Early Childhood students met Free/Reduced lunch criteria.

Our program had a 90.77% average attendance rate for the 2007-08 school year.

All 12 teachers in the Early Childhood Program hold both a Type 04 Early Childhood certificate and an Early Childhood Special Education letter of approval. 7 of the teachers hold master’s degrees. All classroom teachers’ assistants have either at least 60 college credit hours or have passed the State of Illinois paraprofessional exam.

18 of our 21 daily sessions are classrooms have 15 students with one teacher and at least one teaching assistant. 3 of our sessions are full day with one teacher and 2 teaching assistants for 17 students 2 of the full day classrooms are collaboration sites with Head Start.

In order to support a variety of special needs, we have three social workers, four speech/language therapists, an occupational therapy assistant, literacy coordinator, and family coordinator. Part-time staff include bilingual parent coordinators for our Vietnamese, Lao family, and Latino families. We also use the services of a school psychologist, an occupational therapist, and a physical therapist. The Early Childhood Block Grant also includes Parental Training and Prevention (for at-risk families with children Birth-3) Initiatives that work in close collaboration with Urbana Adult Education and Evenstart.

Learning Standards & Curriculum

The Washington Early Childhood program implements the Creative Curriculum program to meet the Illinois Early Learning Standards. In March 2006, we received a 5-year NAEYC accreditation. This plan is updated annually.

School's State Assessment Results

As a preschool program, the school's state assessments are not indicated for our grade.

Sources of Funding

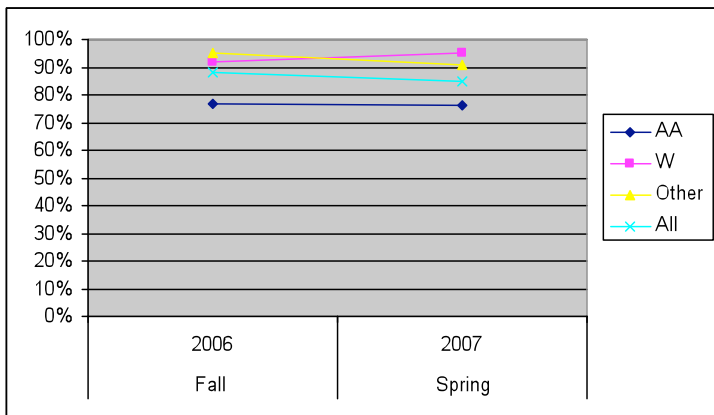
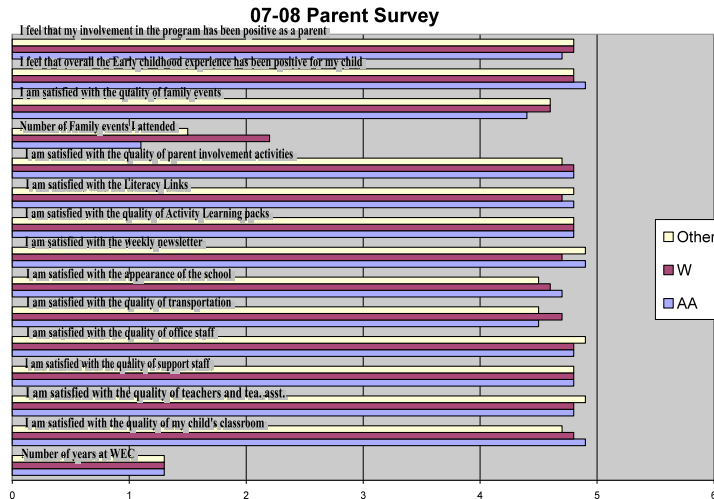
- Early Childhood Block Grant
- Special Education Reimbursement
- Urbana District #116
- Adult and Child Day Care Meal/Snack Program
- Champaign County Head Start

An Analysis of Local Assessment Data/Goals

We are currently collected local student assessment data using the Assessment, Evaluation, and Programming System (AEPS). We will analyze this data to identify possible factors that may be contributing to any areas of underachievement by students. Our analysis will disaggregate achievement results by race.

A. DATA/FACTORS:

- Parent Survey Results (FY05, FY06, FY07, FY08):
- 127 2007-2008 surveys returned out of 400 families
- The primary concern of parents on recent surveys was building/facilities
- 58 parents participated in the 2007-2008 SIP committee
- In 2007-2008 AA parents attendance at family events 50% lower than white families and significantly lower rates of satisfaction
- 2007-08 Parent surveys indicated that the best way to get info to parents was weekly newsletters, daily notes, and phone calls
- 2007-08 Parent surveys indicated that the best way to remind parents of upcoming events were bookbag reminders, necklaces, and email
- Parent-Teacher Conference Attendance Reports (FY05, FY06, FY07, FY08)
-

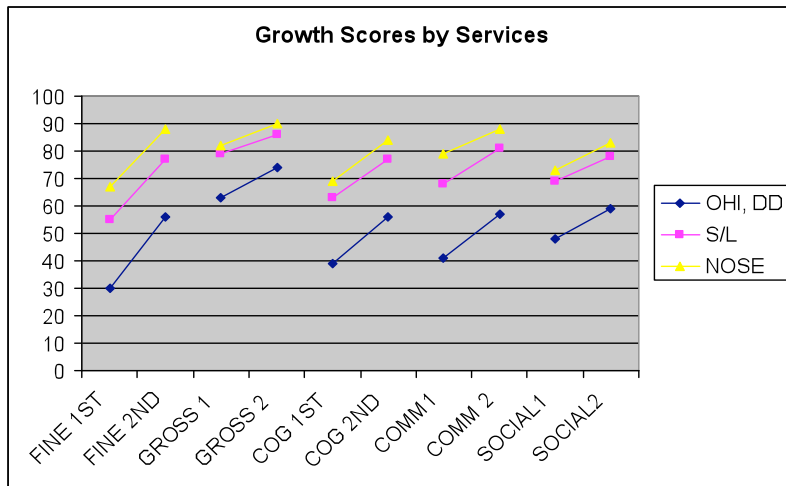
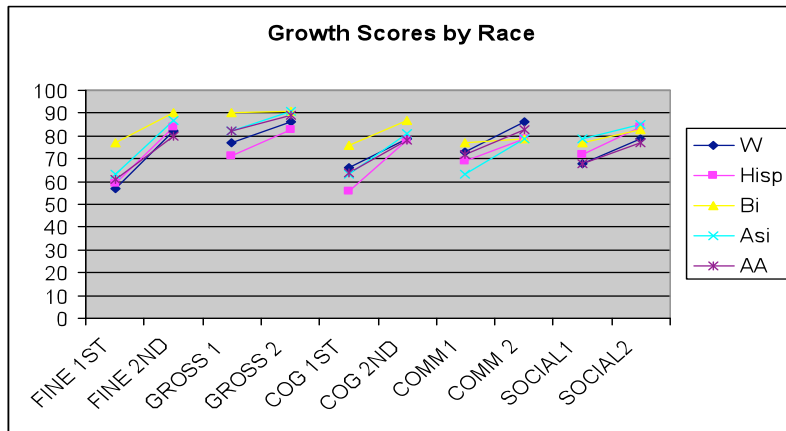
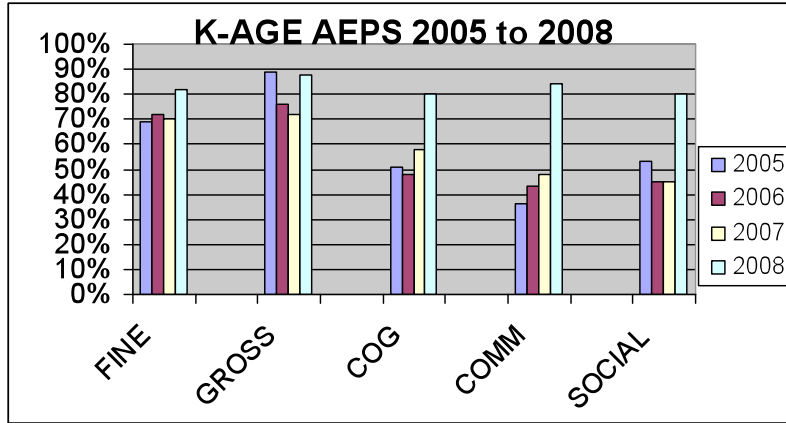


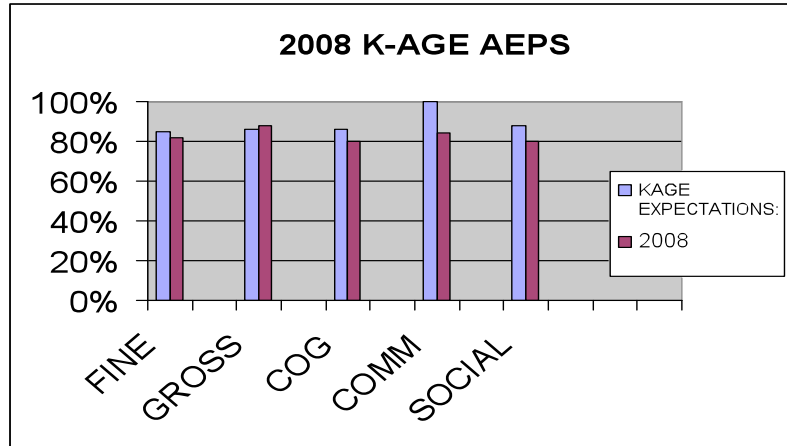
GOAL A: TO INCREASE PARENTAL INVOLVEMENT/PARTICIPATION BY 10%.

- Poll parents at orientation/family events regarding reasons for not attending/participating
- Follow up on carnival suggestions
- Better define the purpose of and rename the Parent SIP committee.
- Increase classroom rep. participation on the parent SIP committee
- Get on-going parent input using multiple modalities
- Consider whether or not incentives will increase parent participation
- Look for other ways for parents to participate in the education process
- Educate parents as to what home visits are/entail/can do for them

B. DATA/FACTORS:

- AEPS (Assessing & Evaluating Preschoolers) Results for K-age Students (FY05, FY06, FY07, FY08)
- State and District goals indicate a need for greater awareness and ability to implement data driven and research-based strategies and to meet specific needs of students.
- Teacher needs assessment/wish list: Increase knowledge in the area of assessment, PBIS, SEL, RTI, Gifted enrichment
- Significant improvement in AEPS data may be due to recent staff re-evaluation of instrument and inter-rater reliability





GOAL B: TO INCREASE STAFF KNOWLEDGE IN THE AREAS OF ASSESSMENT, PBIS, SEL, RTI, AND GIFTED ENRICHMENT

- Reviewing AEPS % of growth
- Reviewing student progress reports
- Attendance at Conferences & workshops

C DATA/FACTORS:

- Staff needs assessment/wish list: Increase knowledge in the area of ELL/At Risk/Lang./Spec. Ed.
- ISBE At-Risk Program Record results (FY05, FY06, FY07, FY08) indicates increase in the number of ELL and second-language learners.
- Data indicates 2007-08 was the first year that Hispanic families were put on a waiting list to access the Spanish-speaking classroom.

GOAL C: TO DECREASE LANGUAGE AND CULTURAL BARRIERS.

- Build teacher learning groups
- Family coord. training
- Workshops & brownbags

D DATA/FACTORS:

- District investment of technology at WEC has resulted in:
- Washington being fully accessible to the Internet via wireless technology
- Classroom teachers will now be able to access Skyward, Filemaker, ISBE, NAEYC, and USD websites from their classrooms and workspace.
- Teacher needs assessment/wish list: Increase knowledge in the area of technology

GOAL D: TO INCREASE STAFF TECHNOLOGY PROFICIENCY

- Build tech learning community
- Use technology as a communication mode to parents
- Use school inservice time to update website and access information

E DATA/FACTORS:

- Staff assessment/wish list: decrease waiting list

- 29 students were on waiting list June FY08 (42 extra spaces were made in classrooms from FY07)
- 78 students were on the waiting list June FY07
- Due to space building space limitations, WEC has been unable to take advantage of PreK for All funds
- Recent study of District elementary buildings indicated they unable to meet the ISBE, Head Start, and NAEYC requirements for our program
- Due to contradictory PNA agreements, community center collaboration discussions have stalled
- 90.77% average attendance rate for the 2007-08
- 8 children dropped due to lack of attendance in 2007-08
- Records indicate a chronic truancy rate of 11%
- The District Board and Superintendent have made verbal commitments to explore program site options

GOAL E: TO IMPROVE OPPORTUNITIES FOR EARLY CHILDHOOD EDUCATION WITHIN URBANA DISTRICT #116.

- Increase & maintain student attendance educating parents and implementing a consistent attendance follow-up program.
- Explore the use of family incentives
- Streamline the enrollment process
- Work with the District to explore other program site options
- Visit state-of-the-art programs across the state to educate ourselves on what an exceptional facility can look like.

Professional Development Activities

TIMELINE FOR 2008-09

- August 26 Review of Parent Survey Results: Spring 2008
Review of School Improvement Activities for 2007-08
Review of Staff needs assessment
Review of Spring 2008 AEPS data
- October 10 Review of Get it! Got it! Go! Spring 2008 data and plan for 08-09 school year
Technology training for teachers
Facilities vision/proposal work
Tier 2 Strategies
Team Meetings/Teacher meetings
- December 15 Technology in the classroom training/website research
Review of Get it! Got it! Go! Fall 2008 data and plan for 08-09 school year
Core WEC standards
Facilities visit reviews
Team Meetings/Teacher meetings
- January 16 District-wide Inservice
- February 20 ELL supports in the classroom/breaking down cultural barriers
Team Meetings/Teacher meetings
- April 9 RTI, SEL, PBIS, and Gifted/Enrichment education. How does it all fit together?
Review of ISBE Program Monitoring visit
Team Meetings/Teacher meetings
- May 15 School Improvement Plan: Accomplishments & New Plan
Team Meetings/Teacher meetings

Membership 2008-2009

Staff

While we consider all members of our staff to be part of our School Improvement Team, our building level SIP co-chairs are: Carrie Riggins, Francinna Wright, and Krysta Nix.

Parents

All parents were sent a letter to explain the purpose of the SIP team and to invite them to participate. An average of 8-12 parents attend the meetings.

Community Representative

Dana Smith – Head Start